



LEAD TECH New Compact CO₂ laser marking machine is designed for providing high quality codes for large-scale substrates and is easy to integrate for most of applications. It is an ideal solution for marking on PET bottles, plastics, PP/PE films, boxes, cartons and other primary coding applications to produce high quality visible codes at fast speed with nearly zero maintenance and no consumables required.

Laser Series

Co₂ 30W/60W

Provide high-quality, reliable laser systems,
deeply trusted by customers in many
countries / regions

Laser Marking System

Reliable & High Performance

- * Optimized power output to ensure longer lifetime
- * No ink/solvent consumables required
- * Clean and environmental friendly
- * IP54 rating ensures maximum reliability and uptime

High Quality Coding

- * Clear & permanent codes, easy to read
- * Engrave technology for anti-counterfeiting and traceability

Increase Product Efficiency

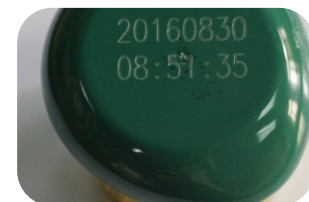
- * Advanced system ensures messages in fast processing
- * Line speed up to 8000m/second
- * Unique design of red-light spot for location adjustment

Easy to Use

- * New compact design, easy to install anywhere
- * 10.4 inch touch screen, WYSIWYG, easy to operate
- * Support up to 14 languages, meet what you need

Working Environment

- * External Temperature 0~45 (relative humidity)
- * Running Temperature
- * Air Humidity 45-75%, non condensing



Item Type	Mode	LT30C
Machine material		CO ₂ Laser
Output power		≥30W
Laser wave length		10.6μm/10.2μm/9.3μm
Lens		High precision 2 dimensional scanning system
Marking speed		≤8000 mm/S
Main control system		Highly integrated mainboard, Embedded 10.4 inch controller
Cooling system		Air cooled
Focus zoom lens		130mm double red light focusing
Marking scale type		Raster font, vector font for choosing
Min.line width		0.03mm
Repeatability accuracy		0.01mm
Working area		110X110mm
Positioning		Red light positioning and double red light focusing
Lines of marking		No limited in working area
Speed		0~200m/min
Power		220VA
Power Consumption		800W

